

# RMAX GeoFoam™ Capability Statement



EPS BLOCK SYSTEM FOR CIVIL ENGINEERING APPLICATIONS

CONCRETE  
FORMWORK

NOISE BARRIERS/WALLS  
/FOUNDATIONS

BRIDGE ABUTMENTS

STEEP SIDE HILLS

BRIDGE SHUTTERING

RMAX GeoFoam™

WEIGHT REDUCTION  
ON UTILITIES

ROAD FOUNDATIONS

RMAX is a division of  
Huntsman Chemical Company  
Australia Pty. Limited  
ABN 48 004 146 338



## About RMAX

RMAX is a subsidiary of Huntsman Chemical Company who is a global manufacturer of chemicals which we use every day. Through their four divisions they operate in more than 30 countries and employ approximately 10,000 associates.

RMAX has been one of Australia's largest manufacturers of high quality expanded polystyrene (EPS) products and expanded Polypropylene (EPP) products for the last 50 years. RMAX products continue to be an essential component within the civil engineering, construction, building, packaging and automotive industries.

RMAX expanded polystyrene (EPS) is manufactured to all relevant Australia's standards and our in-house NATA accredited laboratory makes sure that our material is consistently of the highest quality which has allowed RMAX to grow and expand to become the supplier of choice for hundreds of clients across Australia.



Civil Engineering



Thermal Insulation



Impact Protection



Lightweight

## RMAX GeoFoam™

RMAX GeoFoam™ is a high performance expanded polystyrene (EPS) fill material designed for civil engineering and commercial building projects throughout the construction industry. Its remarkable strength-to-weight ratio makes it the ideal choice for absorbing heavy structural and mechanical loads and reducing underlying soil stresses, which in turn helps to stabilise roads, steep embankments, bridge abutments and sensitive below ground pipe work. It is also a highly versatile material that can be used as a quick and easy cost-saving method for concrete form-work or weight reduction on foundations. Its uses in civil construction are endless.

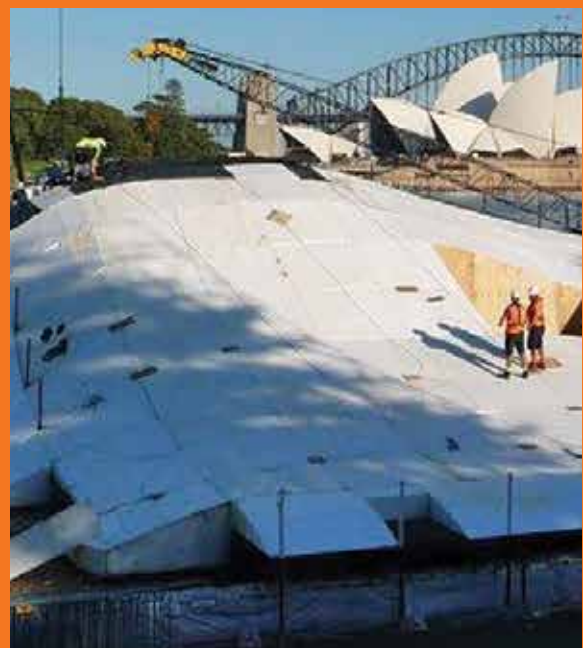
RMAX Geofoam™ is made as blocks from EPS beads that have been expanded and bonded together under heat and pressure to produce a high performance construction material with a unique set of structural properties.

### Features and Benefits:

- Dramatically reduces construction time
- Superb compressive strength
- Approx. 100 times lighter than soil
- 20-30 times lighter than other light weight fill materials
- High compressive resistance
- Significantly reduces lateral forces on walls and foundations
- Reduces concrete usage
- Long term performance
- Quick and easy cost saving method
- Safe and easy to handle
- Non-toxic, environmentally friendly and recyclable



Mount Ousley Project New South Wales - RMS



Madama Butterfly New South Wales - Red Circle Projects



Port of Brisbane Upgrade - Seymour Whyte

## Projects using RMAX GeoFoam™

Perth Crown Towers Western Australia - Brookfield Multiplex

Perth Children's Hospital Western Australia - John Holland

Commonwealth Games Village Gold Coast - Grocon

Cultural Precinct Gold Coast - ADCO

Port of Brisbane Upgrade - Seymour Whyte

Legacy Way Brisbane - Transurban

Canberra Light Rail - John Holland / CPB

Woolgoolga to Ballina Highway Upgrade - FKG

Monash University Victoria - Brookfield Multiplex

Laver Road Upgrade Colac - Vic Roads / Fulton Hogan

Crown Casino Western Australia - Brookfield Multiplex

Mount Ousley Project New South Wales - RMS

Madama Butterfly New South Wales - Red Circle Projects



Monash University Victoria - Brookfield Multiplex



Monash University Victoria - Brookfield Multiplex



Commonwealth Games Village Gold Coast - Grocon



Cultural Precinct Gold Coast - ADCO



Crown Casino Western Australia - Brookfield Multiplex



Crown Casino Western Australia - Brookfield Multiplex



## Safety and Environment

At RMAX we believe that Work, Health and Safety are paramount and are driven within RMAX from the top down. RMAX is committed to maintaining high standards in regards to compliance. Our ISO accredited management system in Safety, Quality and the Environment ensure that well developed work practices, controls and risk mitigation strategies are inherent considerations in our daily operations.

RMAX considers the environmental impacts and will customize our sites to meet legislative and site specific requirements. Our company continues to evolve and develops to meet our customers' needs through a cycle of continuous improvement that assures quality and service standards are achieved.

Primary issues that are considered at all times are:

- Risk mitigation through the development and adherence to safe work practices.
- Effective incident management and prevention strategies.
- Environmental protection strategies are focused on the recycling of waste, waste management and waste reduction outcomes.
- Accountability and formalised KPI reporting.

## Quality Assurance and Legal Compliance

RMAX maintains ISO Accreditations and maintains the pre-qualification requirements that are requested by a range of our customers. This process ensures that all regulatory compliance provisions are current and up to date.

RMAX acknowledges that effective leadership, communication and personal engagement are fundamental to not only our business model, but also are a key criteria towards retaining our ongoing ISO accreditation. Therefore customers can be assured of our ongoing and real commitments driving ongoing quality assurance for our service delivery.



RMAX Recyclable EPS

## RMAX and the Environment

EPS (Expanded Polystyrene) is highly energy efficient in insulation applications. In civil engineering applications RMAX GeoFoam™ is efficient and effective providing clean, fast solutions to geotechnical problems. RMAX EPS products do not contain ozone depleting substances and none are used in their manufacture. RMAX promotes the use of EPS for the construction of buildings and in civil construction applications.

## Recycling EPS

EPS products are recyclable and RMAX has established recycling facilities in all of its plants throughout Australia.

## Energy Efficient Manufacture

The manufacture of EPS is a low pollution process. There is no waste in production as all off cuts or rejects are re-used or recycled.

## RMAX – Innovation Working for You

RMAX is a company driven by innovation. We have pioneered Rigid Cellular Plastics product technologies, leading the development of innovative product solutions for our customers and international partners. In the Australian building industry, RMAX was the first to introduce a termite resistant additive called Perform Guard™ into selected products. The exclusive patented technology incorporates a safe, non-toxic inorganic additive that is a deterrent to termites.

For details on these and other products in our range, visit [www.rmax.com.au](http://www.rmax.com.au)

We are committed to working with our customers to deliver high quality creative solutions to unique construction problems. Contact us and see how our innovative approach using EPS in building construction can help you.

Developed in Australia. Made in Australia.



All Greenhouse Gas emissions associated with printing this product have been offset.

This product is 100% Carbon Neutral

The pictures shown in this brochure are for illustrative purposes only to demonstrate creativity and design and construction flexibility. They do not imply that ThermoSlab™ was used in their construction.



[www.rmax.com.au](http://www.rmax.com.au)

Enquires 1300 888 972

### Shayne Cope

National Business Development Manager – Projects and Infrastructure  
[shayne\\_cope@rmax.com.au](mailto:shayne_cope@rmax.com.au)  
Mobile: +61411 073 910

## AUSTRALIA

### VICTORIA/HEAD OFFICE

2-4 Mephan Street  
Maribyrnong VIC 3032  
Telephone: 1300 888 972  
Facsimile: +61 3 9318 2077

### WESTERN AUSTRALIA

5 Baldwin Street  
Kewdale, WA 6105  
Telephone: 1300 888 972  
Facsimile: +61 8 9353 2002

### NEW SOUTH WALES

27 Chifley Street  
Smithfield NSW 2164  
Telephone: 1300 888 972  
Facsimile: +61 2 9604 7747



## NEW ZEALAND

### Barnes

368 Church Street,  
Penrose, Auckland 1061  
Phone +64 9 579 9725  
Fax +64 9 579 0472

RMAX is a division of Huntsman  
Chemical Company Australia Pty.  
Limited. ABN 48 004 146 338



Enriching lives through innovation

