

NEW RMAX Orange Board™ Ultra Ground Floor EIFS



EXTERNAL INSULATED FINISHING SYSTEM (EIFS) CLADDING

Tough enough to withstand a game of backyard cricket



- Very high impact resistance
- Very high insulation performance
- Quick and easy to install
- Lightweight and easy to handle

RMAX is a division of
Huntsman Chemical Company
Australia Pty. Limited
ABN 48 004 146 338

HUNTSMAN

Enriching lives through innovation





Benefits for your Build

- Very high impact resistance
- Quick and easy to install
- Lightweight and easy to handle
- Easy to shape
- BAL-29 compliance
- CodeMark Certified
- BCA 2019 Vol 2 (Class 1 & 10) compliant
- High sound reduction performance
- Cyclonic wind debris impact resistance
- Waterproof building envelope
- Very high insulation performance
- Environmentally friendly
- Reliable sales and service
- 10 year warranty
- Modern designer finish

RMAX OB Ultra Ground Floor EIFS CodeMark™ Product Certification

The new RMAX OB Ultra Ground Floor EIFS (External Insulating Finishing System) has been audited and assessed in accordance with the National BCA CodeMark™ scheme requirements, and in doing so has achieved CodeMark™ certification under Codemark™ Certificate Number CM40257.

RMAX Orange Board™ Ultra Ground Floor EIFS. **The smart choice for Architects, Builders and Specifiers.**

RMAX OB Ultra Ground Floor EIFS is the smart choice because of its quality, flexibility and economy. It is a superior high density expanded polystyrene (EPS) panel cladding system that has been specifically designed to provide construction professionals with a fully compliant Exterior Insulation Finishing System (EIFS) that they can specify and use with confidence.

The RMAX OB Ultra Ground Floor EIFS system exhibits superior impact resistance performance compared to any other EPS EIFS cladding system available on the market and impact resistance performance equivalent to other traditional masonry systems, making it perfect for single storey or ground floor applications.

The RMAX OB Ultra Ground Floor EIFS system is a light weight exterior cladding system that is quick and easy to install. It also provides weatherproofing and continuous insulation.

Leading independent testing authorities have comprehensively tested and evaluated the RMAX OB Ultra Ground Floor EIFS system and have verified that it complies with all relevant Australian Standards and the 2019 Building Code of Australia (BCA) Performance Requirements.

The system meets all relevant 2019 BCA clauses for external cladding in residential Class 1 and 10 constructions including structural, weatherproofing, damp proofing, energy efficiency and fire resistance.

Consequently the RMAX OB Ultra Ground Floor EIFS system is fully BCA compliant and has been certified to the National CodeMark™ building products certification scheme under CodeMark™ certificate number CM40257, so you can rest assured you are installing a quality product.



Cyclonic Wind Debris Impact Resistance

The RMAX OB Ultra Ground Floor EIFS system is also the first and only Australian designed and manufactured EPS EIFS external cladding system to meet the stringent

requirements of Australian Standard AS / NZS 1170 - 2011, Clause 2.5.8 for cyclonic wind debris impact resistance.

Class:	X28 Rigid cellular polystyrene - Moulded - AS 1366.3
Structural Stability:	P2.1.1(a) & (b)(iii) of BCA Vol 2, AS/NZS 1170.2:2012
Wind Load:	3.10.1 of BCA Vol 2, AS 1170.2 and AS 4040.3 Regions A,B,C & D to wind load category C4
Weather Proofing:	P2.2.2, BCA Vol 2, AS 4284
Energy Efficiency:	3.12.14 Energy efficiency for external walls in accordance with AS/NZS 4859.1:2018

Attributes

Code Mark Certification Yes	Moisture and rot resistant Yes
BAL 12.5, 19 & 29 Compliance Yes	Summer Thermal rating R3.35
Structurally stable Yes	Winter Thermal rating R3.53
BCA 2019 Vol 2 compliance Yes	Cyclonic Wind Resistance Yes

Weighted Sound Reduction Index (Rw) Performance

Panel Thickness	Construction	Rw
100mm + 25mm Batten	Panel + 5mm render + frame + Tyvek sarking + 10mm thick plaster Full Wall System	38dB

Easy to Install

The RMAX OB Ultra Ground Floor EIFS system is easy to install. The lightweight, rigid construction of the panels enables them to be easily transported, unloaded and maneuvered onto any building site. This contributes to fast construction times and reduced construction costs.

Design Flexibility

Versatility is a key characteristic of the RMAX OB Ultra Ground Floor EIFS. The unique properties allow the panels to be easily cut without loss of strength. In addition to this, they offer the dual benefits of both thermal insulation and a superior rendering surface for a wide range of residential buildings.

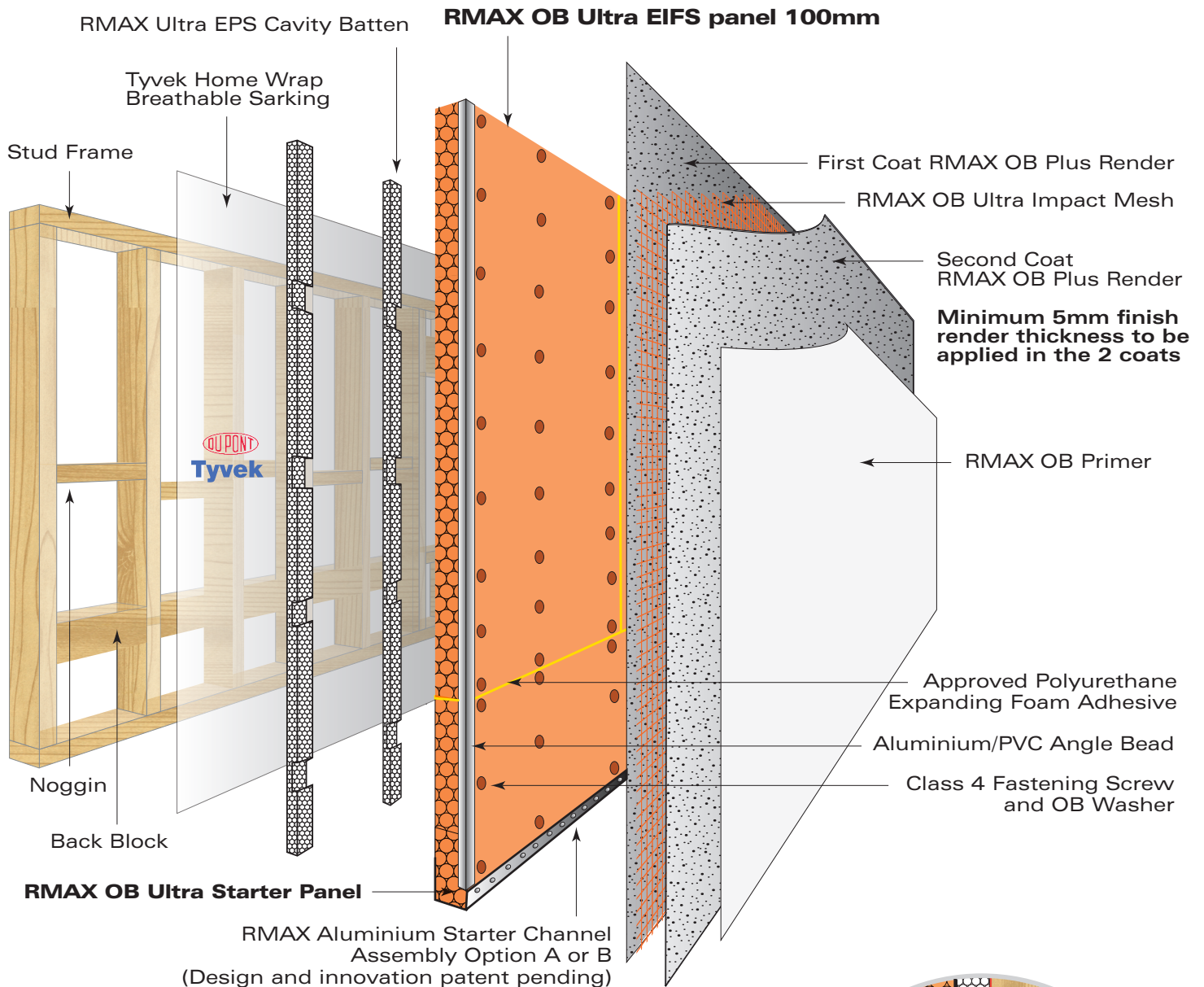
Environmentally Friendly

RMAX OB Ultra Ground Floor EIFS panels are made from non toxic EPS, which is odourless and non irritating to the skin or eyes. It is also biologically inert, contains no HCFCs, is safe for the environment and can be recycled.

Reliable Sales & Service

RMAX is one of Australia's largest producers of Expanded Polystyrene products and with over 50 years of experience, this means you can trust RMAX for sales, service and delivery. All our staff are experienced and are available to advise and answer all your queries. Simply contact your local state office and ask to speak to an RMAX OB Ultra Ground Floor EIFS consultant today.

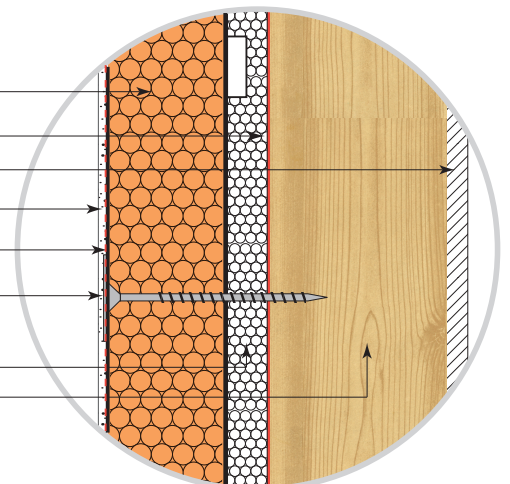
Exploded View of RMAX OB Ultra Ground Floor EIFS System



Cross Section Detail of RMAX OB Ultra Ground Floor EIFS System

RMX OB Ultra EIFS panel

- Tyvek Breathable Sarking
- Plaster Board
- RMX OB Plus Render Finish
- RMX OB Ultra Mesh
- Class 4 Fastening Screw and OB Washer
- RMX EPS Cavity Batten 40mm x (10-25mm)
- Stud Frame



The high performance of the RMAX OB Ultra Ground Floor EIFS system is achieved by the sum of its individual components.

RMAX OB Ultra Ground Floor EIFS Starter Channel

- The **UNIQUE** RMAX Starter Channel (Patent pending) greatly assists in providing the mandatory BAL fire resistance performance and with weatherproofing and drainage requirements.
- The **UNIQUE** RMAX Starter Channel (Patent pending) can be fixed directly to the slab edge or directly to the slab rebate.



RMAX OB Ultra Ground Floor EIFS Cavity Battens

The RMAX OB Ultra Ground Floor EIFS system has a weatherproof external envelope incorporating the RMAX Batten Cavity system to allow for proper drainage and moisture management.

- Dupont Tyvek Home Wrap breathable sarking when installed in conjunction with the RMAX X28 EPS Cavity Battens ensures a weatherproof external building envelope is able to be achieved.
- The **UNIQUE** RMAX X28 Cavity Battens feature cut out tabs as part of their design to allow air circulation to occur between each of the studs, facilitating condensation and moisture management within the wall cavity.



RMAX OB Ultra Ground Floor EIFS Starter Panel

The RMAX OB Ultra Ground Floor EIFS system has a **UNIQUE** moulded starter panel, manufactured from a special proprietary high density grade EPS bead.

- The RMAX Starter Panel provides superior water proofing and resistance to water absorbency compared to most standard M grade EPS EIFS panels currently on the market.
- The proprietary RMAX OB Ultra Ground Floor EIFS Starter Panels are positioned in the RMAX Starter Channel before being fastened to the stud frame.



RMAX OB Ultra Ground Floor EIFS Panels

Once the starter panels have been installed and fastened to the frame, the RMAX OB Ultra EIFS cladding panels are then installed against the stud frame directly on top of the RMAX OB Ultra starter panels.

- The RMAX OB EIFS cladding panels are screwed directly to the frame through the Cavity Battens.

RMAX OB Plus Render and OB Ultra Mesh

Once all the walls around the building perimeter have been clad and the corner angles have been installed, the clad walls are now ready to be finished with the application of render. The RMAX OB Plus Render must be applied for CodeMark certification and the system warranty to be applicable.

- The first coat of RMAX OB Plus Render is applied directly to the EPS EIFS panels.
- Once the first coat of RMAX OB Plus Render has been applied, the RMAX OB Ultra Mesh can then be embedded into the first coat of render and troweled over. The OB Ultra Mesh exoskeleton helps provide the high impact resistance.
- The second coat of RMAX OB Plus Render is then applied.
- The total minimum RMAX OB Plus Render thickness from 2 coats must be 5mm.

RMAX OB Primer

After a minimum 4 days curing, the RMAX OB Primer (white in colour) is applied by using a brush and roller.

Final result is a high impact resistant external cladding system incorporating a weatherproof envelope capable of withstanding significant abuse.



RMAX Orange Board Ultra Ground Floor EIFS



RMAX Recyclable EPS

RMAX and the Environment

The RMAX OB Ultra Ground Floor EIFS system is highly energy efficient. The energy saved over the lifetime of an RMAX OB Ultra Ground Floor EIFS system in reduced heating and cooling demand, more than compensates for the raw material used in its production.

The effective application of EPS insulation can cut carbon dioxide emissions by up to 50%. The energy used in its manufacture may be recovered within six months by the energy saved in the buildings when EPS is used to insulate the building depending on the building design and the climatic conditions.

RMAX promotes the use of EPS, with its superior thermal insulation properties, to lower energy requirements and reduce the impact of buildings on the environment.

RMAX EPS is free from ozone depleting substances in manufacture and composition. EPS is manufactured without CFCs, HCFCs or HFCs. Manufacturing is done with blowing agents that have Zero Ozone Depleting Potential (ODP).

Recycling EPS

EPS products are recyclable and RMAX has established recycling facilities in all of its plants throughout Australia. RMAX is a member of PACIA (Plastics and Chemical Industries Association).

Energy Efficient Manufacture

The manufacture of EPS is a low pollution process. There is no waste in production as all off cuts or rejects are re-used or recycled.

RMAX – Innovation Working for You

RMAX is a company driven by innovation. We have pioneered Rigid Cellular Plastics product technologies, leading the development of innovative product solutions for our customers and international partners.

Other new and innovative products from RMAX are ThermaSlab™ and ThermaProof™. For details on these and other products in our range, visit www.rmax.com.au.

We are committed to working with our customers to deliver high quality creative solutions to construction problems. Contact us and see how our innovative approach using EPS in building construction can help you.

Developed in Australia. Made in Australia.

The RMAX OB Ultra Ground Floor EIFS system has been developed in Australia by RMAX specifically for Australian conditions and to meet the stringent Australian Building Codes in all states. It is manufactured in RMAX plants around Australia in controlled production processes to maintain consistent quality.

The pictures and illustrations shown in this brochure are for illustrative purposes only to demonstrate creativity and design and construction flexibility. They do not imply the RMAX OB EIFS Panels were used in their construction.



www.rmax.com.au

Enquiries 1300 888 972

AUSTRALIA

VICTORIA

2-4 Mephan Street

Maribyrnong VIC 3032

Telephone: 1300 888 972

Email: vicsales@rmax.com.au

WESTERN AUSTRALIA

5 Baldwin Street

Kewdale WA 6105

Telephone: 1300 888 972

Email: wasales@rmax.com.au

NEW SOUTH WALES

27 Chifley Street

Smithfield NSW 2164

Telephone: 1300 888 972

Email: nswsales@rmax.com.au



NEW ZEALAND

Barnes

368 Church Street

Penrose Auckland 1016

Telephone: +64 9 579 9725

Facsimile: +64 9 579 0472

RMAX is a division of Huntsman
Chemical Company Australia Pty.
Limited. ABN 48 004 146 338

HUNTSMAN

Enriching lives through innovation

